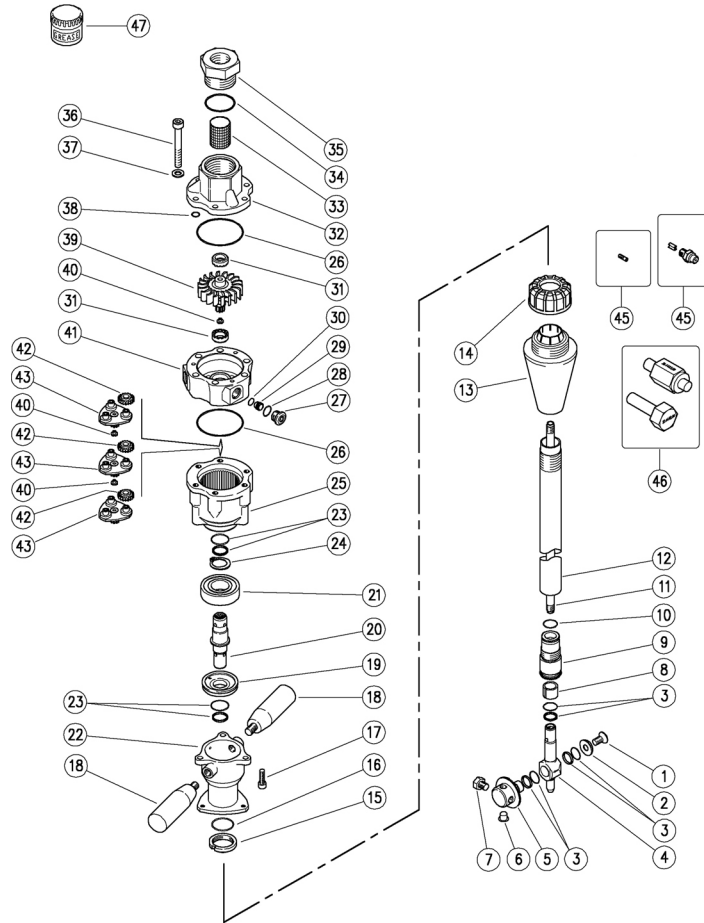


25.4600.20 MI63-50 Tank cl.,hydr.-driv.,2mm-inject.  
 25.4600.24 MI63-45 Tank cl.,hydr.-driv.,2mm-inject.  
 25.4600.30 MI63-50 Tank cl.,hydr.-driv.,3mm-inject.

25.4600.40 MI63-50-1/8 inject.4,00mm  
 25.4600.50 MI63-50 Tank cl.,hydr.-driv.,5mm-inject.  
 25.4902.25 MI63A-50 Tank cl.,hy.-driv.,2,5mm-Atex 2460



| Pos. | P/N         | Description                               | Q.ty | K1 | K2 | K3 | K4 |
|------|-------------|---|------|----|----|----|----|
| 1    | 16.1954.12R | Screw, DIN7991 M8x12 mm Sst.              | 1    |    |    |    | 10 |
| 2    | 80.0015.51R | C/sunk washer, 8,5x22x4,5mm Sst.          | 1    |    |    |    | 3  |
| 3    | 10.2030.00R | Stem seal, 15x20x2,2 mm +O-ring           | 3    | •  |    |    | 4  |
| 4    | 80.0005.52R | Buffer, M10 Sst.                          | 1    |    |    |    | 1  |
| 5    | 80.0014.51R | Nzl hold. pinio.z.57, 4x1/8Npt F sst. (1) | 1    |    |    |    | 1  |
| 5    | 80.0016.51R | Nzl hold. pinion, z.57, M4 FFFS Sst. (2)  | 1    |    |    |    | 1  |
| 6    | 15.3710.18R | Plug, 1/8" Bsp plast. (1)                 | 2    |    |    |    | 4  |
| 6    | 15.3704.00R | Plug, M4 plast. (2)                       | 2    |    |    |    | 4  |
| 7    | 15.3711.18R | Grub screw, 303 Sst. 1/8M Npt (1)         | 2    |    |    |    | 4  |
| 7    | 16.1830.00R | Screw, DIN912 M4x8 mm Sst. (2)            | 2    |    |    |    | 10 |
| 8    | 80.0009.85R | Bushing, opn. 15x19x14,8mm PTFE           | 1    | •  |    |    | 5  |
| 9    | 80.0027.23R | Pinion.34 Sst+Bushing,opn.15mm            | 1    |    |    |    | 1  |
| 10   | 10.3184.10R | O-ring, 2,62x18,72 mm Vi 70               | 1    | •  |    |    | 10 |
| 11   | 80.0003.56R | Tube, M10x1 MM 894mm Sst.                 | 1    |    |    |    | 1  |
| 12   | 80.0052.56R | Tube, M28x1 M 895mm Sst.                  | 1    |    |    |    | 1  |
| 13   | 80.0021.84R | Tapered plug, TPEs black                  | 1    | •  |    |    | 3  |
| 14   | 80.0316.84R | Ring nut, PP black                        | 1    | •  |    |    | 10 |
| 15   | 80.0012.51R | Ring nut, M28x1 Sst.                      | 1    |    |    |    | 2  |
| 16   | 10.3205.10R | O-ring, 2,62x26,64 mm Vi 70               | 1    | •  |    |    | 10 |
| 17   | 16.1896.20R | Screw, DIN912 M6x20 mm Sst.               | 3    |    |    |    | 10 |
| 18   | 13.0600.00R | Knob M10x15 mm                            | 2    |    |    |    | 2  |
| 19   | 80.0233.51R | Spacer ring, 18x46,8x10,8mm Sst.          | 1    |    |    |    | 1  |
| 20   | 80.0232.51R | Geared shaft, Sst.                        | 1    |    |    |    | 1  |
| 21   | 11.4420.47R | Ball-bearing, 20x47x14 mm - 2RS Sst.      | 1    | •  |    |    | 2  |
| 22   | 80.0231.52R | Housing sleeve, Sst.                      | 1    |    |    |    | 1  |
| 23   | 10.2030.18R | Stem seal, 18x23x2 mm +O-ring Epdm        | 2    | •  |    |    | 5  |
| 24   | 10.1020.05R | Snap ring, E 20 Sst.                      | 1    | •  |    |    | 10 |


| Pos. | P/N         | Description                           | Q.ty | K1 | K2 | K3 | K4 |
|------|-------------|---------------------------------------|------|----|----|----|----|
| 25   | 80.0207.52R | Ring gear, z.50 Sst.                  | 1    |    |    |    | 1  |
| 26   | 10.3080.58R | O-ring, 1,78x56,87 mm Vi 70           | 2    | •  |    |    | 10 |
| 27   | 80.0219.51R | Plug, int.hex., M14x1 Sst.            | 3    |    |    |    | 3  |
| 28   | 10.3060.10R | O-ring, 1,78x12,42 mm Vi 70           | 3    | •  |    |    | 10 |
| 29   | 80.0221.51R | Injector, 2mm Sst.                    | 3    |    |    |    | 3  |
| 29   | 80.0222.51R | Injector, 3mm Sst. (3)                | 3    |    |    |    | 3  |
| 29   | 80.0223.51R | Injector, 4mm Sst. (4)                | 3    |    |    |    | 3  |
| 29   | 80.0224.51R | Injector, 5mm Sst. (5)                | 3    |    |    |    | 3  |
| 30   | 10.3003.00R | O-ring, 1x8 mm                        | 3    | •  |    |    | 10 |
| 31   | 80.0212.84R | Bushing, plast.                       | 2    | •  |    |    | 10 |
| 32   | 80.0201.52R | Manifold, Sst.                        | 1    |    |    |    | 1  |
| 33   | 28.0014.53R | Net, 38mesh-400µm Sst.                | 1    |    |    |    | 10 |
| 34   | 10.3208.36R | O-ring, 2,62x36,17 mm Vi 70           | 1    | •  |    |    | 5  |
| 35   | 80.0217.51R | Coupl., M40x2 M -3/4F Bsp Sst.        | 1    |    |    |    | 1  |
| 36   | 16.1955.60R | Screw, DIN912 M8x60 mm Sst.           | 6    |    |    |    | 10 |
| 37   | 14.3573.00R | Safet. washer, 8,4x2 mm Sst.          | 6    |    |    |    | 10 |
| 38   | 10.3109.93R | O-ring, 2,4x8,3 mm Vi 70              | 3    | •  |    |    | 10 |
| 39   | 80.0203.52R | Turbine, Sst.                         | 1    |    |    |    | 1  |
| 40   | 80.0213.84R | Shim pin, plast.                      | 3    | •  |    |    | 10 |
| 41   | 80.0202.52R | Stator, Sst.                          | 1    |    |    |    | 1  |
| 42   | 80.0204.38R | Planetary gear, z.19 brz              | 9    | •  |    |    | 9  |
| 43   | 80.0205.00R | Planetary gear holder+3 pins, Sst.    | 3    |    |    |    | 1  |
| 45   | 16.1363.45R | Nzl, sst,1/8M Npt+guid.vane 00.045 ** | 2-4  |    |    |    | 10 |
| 45   | 25.1091.51R | Nozzle, 025 - M4 Sst. pink ***        | 2-4  |    |    |    | 10 |
| 45   | 25.1190.51R | Nozzle, 02 - M4 Sst. light green ***  | 2-4  |    |    |    | 10 |
| 45   | 25.1093.51R | Nozzle, 035 - M4 Sst. brown ***       | 2-4  |    |    |    | 10 |
| 46   | 25.4631.24  | Seal Setup Tool Kit - MI63 3pcs. ***  | 1    |    |    |    | 1  |

\*\* Different measures available

\*\*\* On request

11 80.0065.56 Tube M10x1 L=342mm  
 12 80.0066.56 Tube M28x1 L=343,5mm

11 80.0011.56 Tube M10x1 L=629mm  
 12 80.0018.56 Tube M28x1 L=630,5mm

| Kit | P/N        | Description                      |  |
|-----|------------|----------------------------------|---|
| K1  | 25.4608.24 | Spares Kit - MI63 9x1pcs.        | 1   |
| K2  | 25.4630.24 | Spares Kit - MI63 - MI85 6x1pcs. | 1   |
| K3  | 80.0020.00 | Tapered plug -M63                | 1   |

(1) 25.4600.20 (2) 25.4600.24 (3) 25.4600.30 (4) 25.4600.40 (5) 25.4600.50