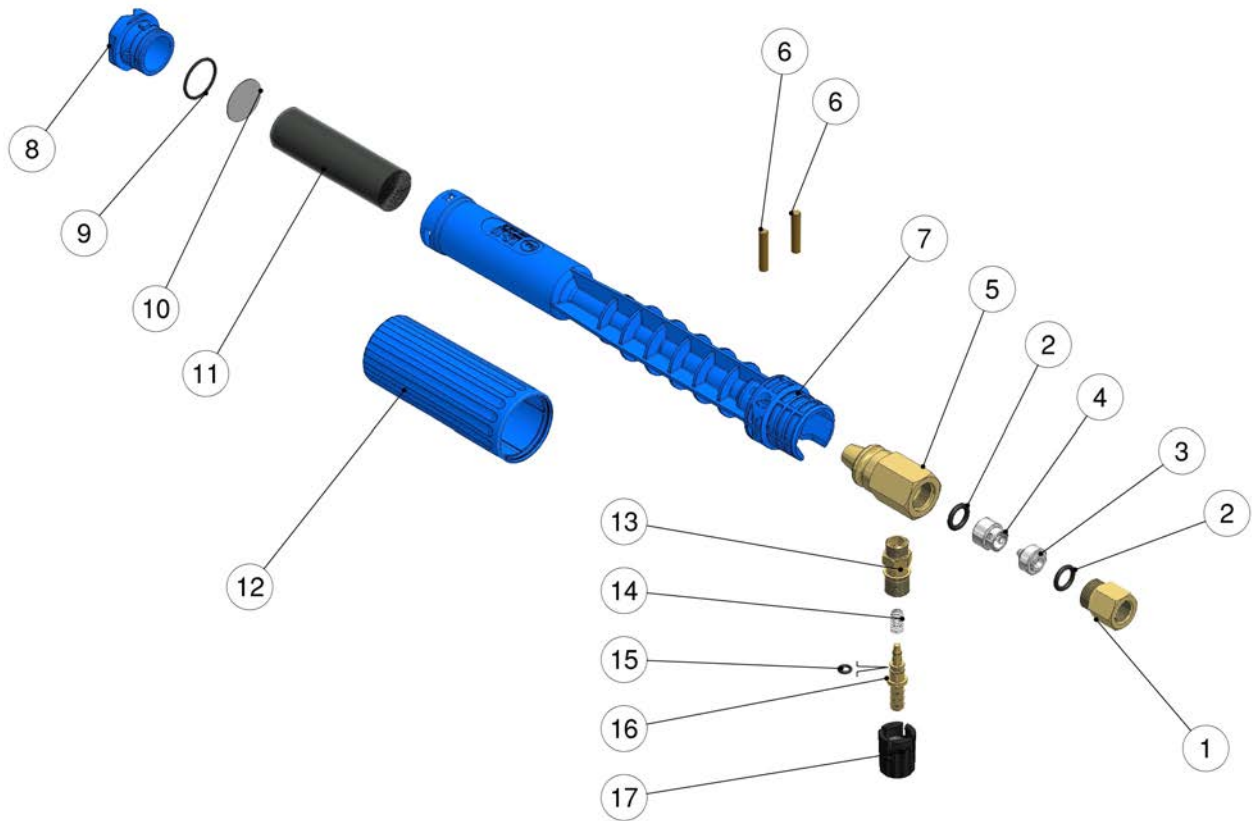


25.1860.15 LS10 foamer 3/8M Bsp-1,5mm nzl.  
 25.1860.50 LS10 foamer 1/4F Bsp-1,5mm nzl.

25.1860.50 LS10 foamer 1/4F Bsp-1,5mm nzl.  
 25.1860.65 LS10 foamer 3/8M Bsp-1,5mm nzl.



Pos.	P/N	Description	Q.ty	K1	K2	K3	K4	
1	29.0825.31R	Nipple, 3/8M-1/4F Bsp brass (1,2)	1					5
1	13.5024.31R	Nipple, brass 3/8MM Bsp (3,4)	1					25
2	10.3174.00R	O-ring, 2,62x9,93 mm	2					10
3	29.0806.51R	Nozzle -LS10, 1,5 mm Sst.	1					5
4	29.0807.51R	Counter-nozzle, Sst.	1					5
5	25.1837.31R	Injector Body LS10,Brass	1					3
6	30.0509.31R	Parallel pin, 5x24,5 mm brass	2					10
7	25.1838.85R	Casing -LS10 plastic, blue (2,4)	1					5
8	25.1827.85R	Front Nozzle LS10 plastic blue (2,4)	1					10
9	10.3072.10R	O-ring, 1,78x20,35 mm Vi 70	1					10

Pos.	P/N	Description	Q.ty	K1	K2	K3	K4	
10	29.0802.53R	Diaphragm, 25x0,5 mm Sst.	1					10
11	29.0803.85R	Strainer, PA	1					5
12	25.1828.85R	Cover -LS10 plastic blue (2,4)	1					5
12	25.1828.84R	Cover -LS10 plastic blue (1,3)	1					5
13	21.0173.31R	Coupling, M12x1-1/4M Bsp brass	1					10
14	21.0158.51R	Spring, 0,8x7x15 mm Sst.	1					10
15	10.3043.01R	O-ring, 1,78x4,48 mm Vi 70	1					10
16	21.0155.99R	Hose barb, d.8 mm brass+o-ring	1					5
17	21.0171.84R	Inject.knob, 1/4F Bsp black	1					10

(1) 25.1860.00 (2) 25.1860.50 (3) 25.1860.15 (4) 25.1860.65