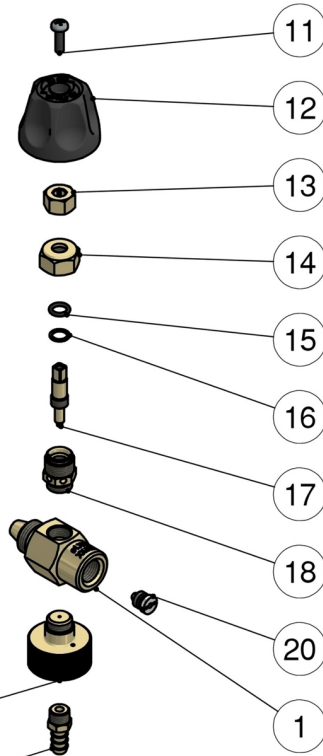
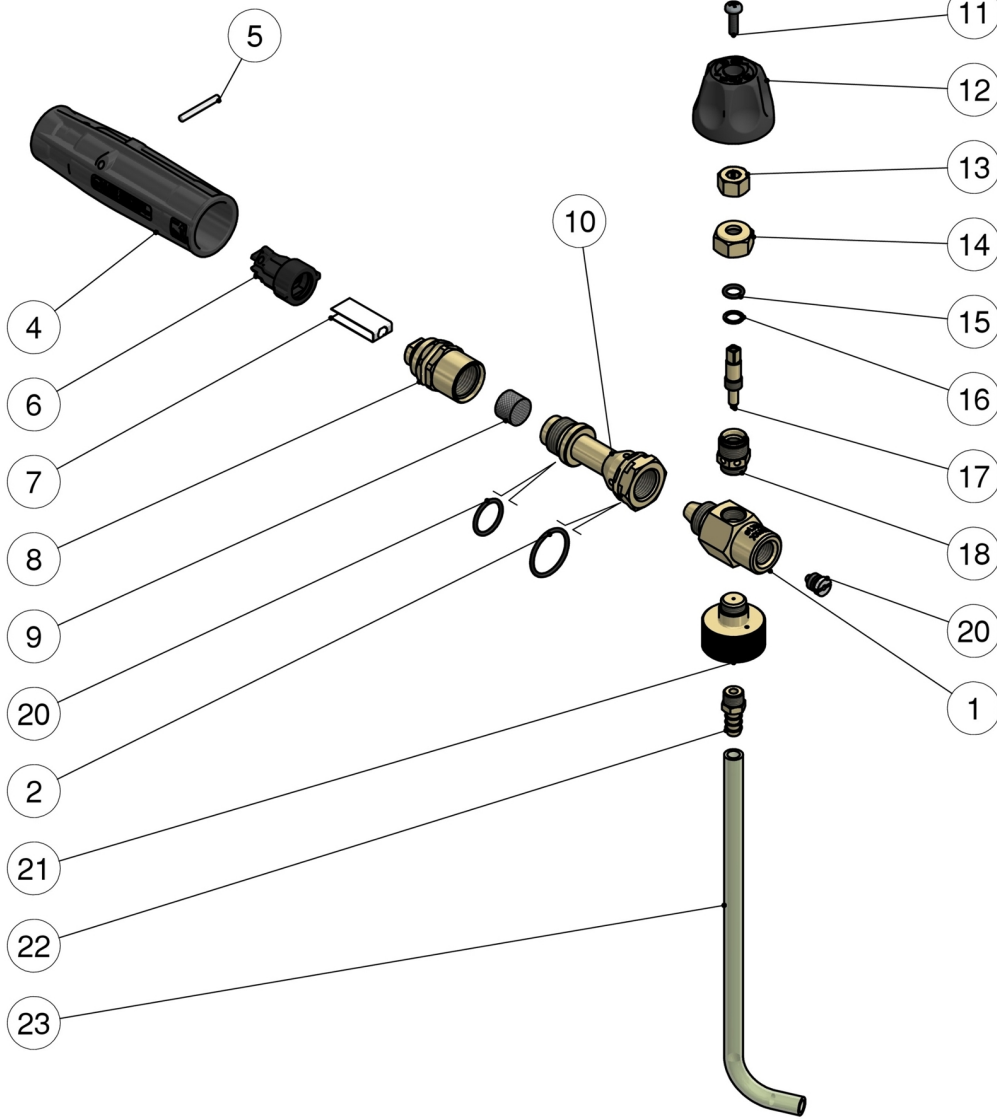


25.1520.12 LS3.2 Foamer 1,25mm+1L tank

25.1520.14 LS3.1 Foamer 1,4mm + tank 1L



Pos.	P/N	Description	Q.ty	K1	K2	K3	K4	
1	25.1503.31R	Injector housing	1					3
2	10.3072.50R	O-ring, 1,78x21,95 mm	1					10
3	10.3066.00R	O-ring, 1,78x15,6 mm	1					10
4	25.1018.84R	Nozzle knob, black	1					10
5	15.1041.00R	Parallel pin, 3x25 mm Sst.	1					10
6	25.0952.84R	Deflector housing	1					10
7	25.1020.53R	Sst deflector	1					10
8	25.1522.31R	Injector housing	1					3
9	25.1512.51R	Pressed strainer, 14x10 mm Sst.	1					10
10	25.1521.31R	Front injector housing	1					3
11	16.1840.00R	Screw, DIN7985 M4x14 mm z.pl.	1					10
12	25.1535.84R	Knob, PA black v.2	1					10
13	29.0924.31R	Groove nut, brass	1					10

Pos.	P/N	Description	Q.ty	K1	K2	K3	K4	
14	29.0938.31R	Ring nut, M14x1 brass	1					10
15	10.3052.00R	O-ring, 1,78x6,75 mm	1					25
16	29.0940.51R	Washer, 7x9,5x0,7 mm Sst.	1					10
17	25.1504.31R	Pin	1					10
18	25.1502.31R	Piston holder	1					5
19	15.3808.12	Label LS3	1					10
20	21.0223.51R	Nozzle, M8x1 - 1,25 mm Sst. (1)	1					10
20	21.0226.51R	Nozzle, M8x1 - 1,4 mm Sst. (2)	1					5
21	25.1505.31R	Tank holder	1					3
22	29.0103.31R	Nipple, brass, 1/8M Bsp+8mm h.barb	1					10
23	16.0521.00R	Hose, 6x9 L.255 mm PVC	1					5
24	14.6502.25R	Plastic tank 1 lit. (20,5mm inlet)	1					8

(1) 25.1520.12 (2) 25.1520.14